

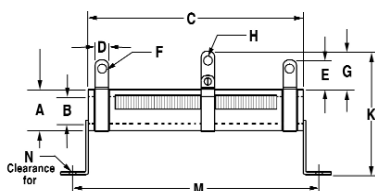
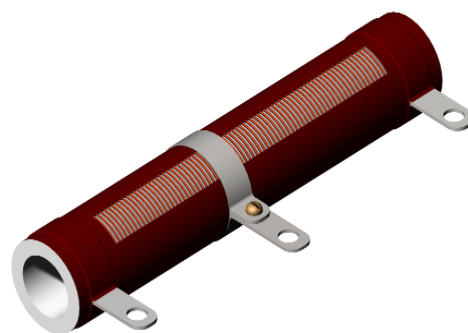


# AVT AST

## ADJUSTABLE WIREWOUND RESISTORS

12 WATTS THRU 225 WATTS

H.E.I. Adjustable Resistors are constructed with steatite ceramic cores and terminated with welded terminals and wound with the finest alloy resistance wires welded to the terminals. Our special formula of vitreous enamel (AVT) or silicone (AST) coatings are then used to insulate the resistors. A section of the windings are made bare for connecting to a band terminal that implements the adjustment function. This construction insures long life, durability, and reliability.



A wide variety of special resistor core sizes are available. Any tapped, combination fixed and adjustable can be made to custom specifications, including tolerance, brackets, and terminals.

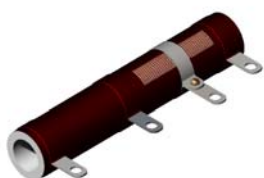
### DIMENSION INFORMATION

TYPE	WATT	A TYP	B +/- .032(0.8)	C +/- .032(0.8)	D +/- .032(0.8)	E TYP	F TYP	G TYP	H TYP	K TYP	M TYP	N
AVT-10	12	.31 (7.9)	.19 (4.8)	1.75 (44.5)	.19 (4.8)	.44 (11.2)	.10 (2.5)	.50 (12.7)	.10 (2.5)	.94 (23.9)	2.19 (55.6)	6-32
AVT-25	25	.56 (14.2)	.31 (7.9)	2.00 (50.8)	.25 (6.4)	.56 (14.2)	.17 (4.3)	.69 (17.5)	.17 (4.3)	1.69 (42.9)	2.75 (69.8)	8-32
AVT-25A	30	.75 (19)	.50 (12.7)	2.00 (50.8)	.25 (6.4)	.56 (14.2)	.17 (4.3)	.69 (17.5)	.17 (4.3)	2.31 (58.7)	2.88 (73.2)	10-32
AVT-25B	30	.63 (16)	.45 (11.4)	2.00 (50.8)	.25 (6.4)	.56 (14.2)	.17 (4.3)	.69 (17.5)	.17 (4.3)	1.69 (42.9)	2.63 (66.8)	8-32
AVT-50	50	.56 (14.2)	.31 (7.9)	4.00 (102)	.25 (6.4)	.56 (14.2)	.17 (4.3)	.69 (17.5)	.17 (4.3)	1.69 (42.9)	4.75 (121)	8-32
AVT-50A	60	.75 (19)	.50 (12.7)	4.00 (102)	.25 (6.4)	.56 (14.2)	.17 (4.3)	.69 (17.5)	.17 (4.3)	2.31 (58.7)	4.88 (124)	10-32
AVT-50B	70	.75 (19)	.55 (14)	4.50 (114)	.25 (6.4)	.56 (14.2)	.17 (4.3)	.69 (17.5)	.17 (4.3)	2.31 (58.7)	5.38 (137)	10-32
AVT-75	75	.56 (14.2)	.31 (7.9)	6.00 (152)	.25 (6.4)	.56 (14.2)	.17 (4.3)	.69 (17.5)	.17 (4.3)	1.69 (42.9)	6.75 (171)	8-32
AVT-75A	90	.75 (19)	.50 (12.7)	6.00 (152)	.25 (6.4)	.56 (14.2)	.17 (4.3)	.69 (17.5)	.17 (4.3)	2.31 (58.7)	6.88 (175)	10-32
AVT-100	100	.75 (19)	.50 (12.7)	6.50 (165)	.25 (6.4)	.56 (14.2)	.17 (4.3)	.69 (17.5)	.17 (4.3)	2.31 (58.7)	7.38 (187)	10-32
AVT-130	130	1.13 (28.7)	.75 (19)	6.50 (165)	.31 (7.9)	.63 (16)	.17 (4.3)	.88 (22.4)	.17 (4.3)	2.81 (71.4)	7.38 (187)	10-32
AVT-160	175	1.13 (28.7)	.75 (19)	8.50 (216)	.31 (7.9)	.63 (16)	.20 (5.1)	.88 (22.4)	.17 (4.3)	2.81 (71.4)	9.38 (238)	10-32
AVT-200	225	1.13 (28.7)	.75 (19)	10.50 (267)	.31 (7.9)	.63 (16)	.20 (5.1)	.88 (22.4)	.17 (4.3)	2.81 (71.4)	11.38 (289)	10-32

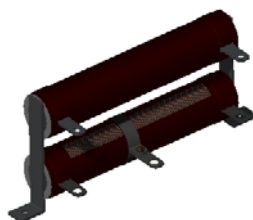
AVT - VITREOUS    AST - SILICON

inches (mm)

### PACKAGE OPTIONS



SPECIAL LEAD  
CONFIGURATION



ASSEMBLIES

Contact Factory for a wide variety of custom configurations and assemblies.

### ORDER INFORMATION

**AVT - 10 - 250 - 1% - QC - BKTS**

TYPE  
V=VITREOUS  
S=SILICON

RESISTANCE  
VALUE

ADD FOR  
SPECIAL  
TOLERANCE

ADD FOR  
QUICK  
CONNECT

ADD FOR  
STANDARD  
BRACKETS

CONTINUED NEXT PAGE

**AVT  
AST****ADJUSTABLE  
WIREWOUND RESISTORS**

CONTINUED

**ENGINEERING DATA AND ORDER OPTIONS**

<b>RESISTANCE TOLERANCE:</b>	Standard tolerance is $\pm 10\%$ . Special tolerances are available. See Ordering for details.
<b>TEMPERATURE COEFFICIENT:</b>	$\pm 400$ PPM/ $^{\circ}$ C $1\Omega$ to $20\Omega$ , $\pm 260$ PPM/ $^{\circ}$ C $20\Omega$ and above. (Special TC's are available, consult factory.)
<b>OVERLOAD:</b>	10 X rated wattage for 5 seconds.
<b>DIELECTRIC WITHSTANDING VOLTAGE:</b>	1000 VAC measured from terminals to mounting brackets.
<b>INDUCTANCE:</b>	Single layer inductively wound alloy wire.
<b>STANDARD TERMINALS:</b>	Terminals are suited for solder or bolt connections.
<b>QUICK CONNECT TERMINALS:</b>	Resistors with a core O.D. (DIM A) of 0.31" can be supplied with a 3/16" Wide X .020" Thick male quick connect terminal. See Ordering for details.
<b>COATING:</b>	Available in Vitreous Enamel or Silicone.
<b>CORE:</b>	Steatite ceramic.
<b>STANDARD MOUNTING BRACKETS:</b>	Push-In, Friction-Grip mounting brackets are available.
<b>SPECIAL MOUNTING HARDWARE:</b>	Vertical and horizontal thru-bolt mounting hardware with mica or ceramic bushing for high voltage applications are available. Multiple resistor mounting brackets and live mounting brackets can also be supplied.

